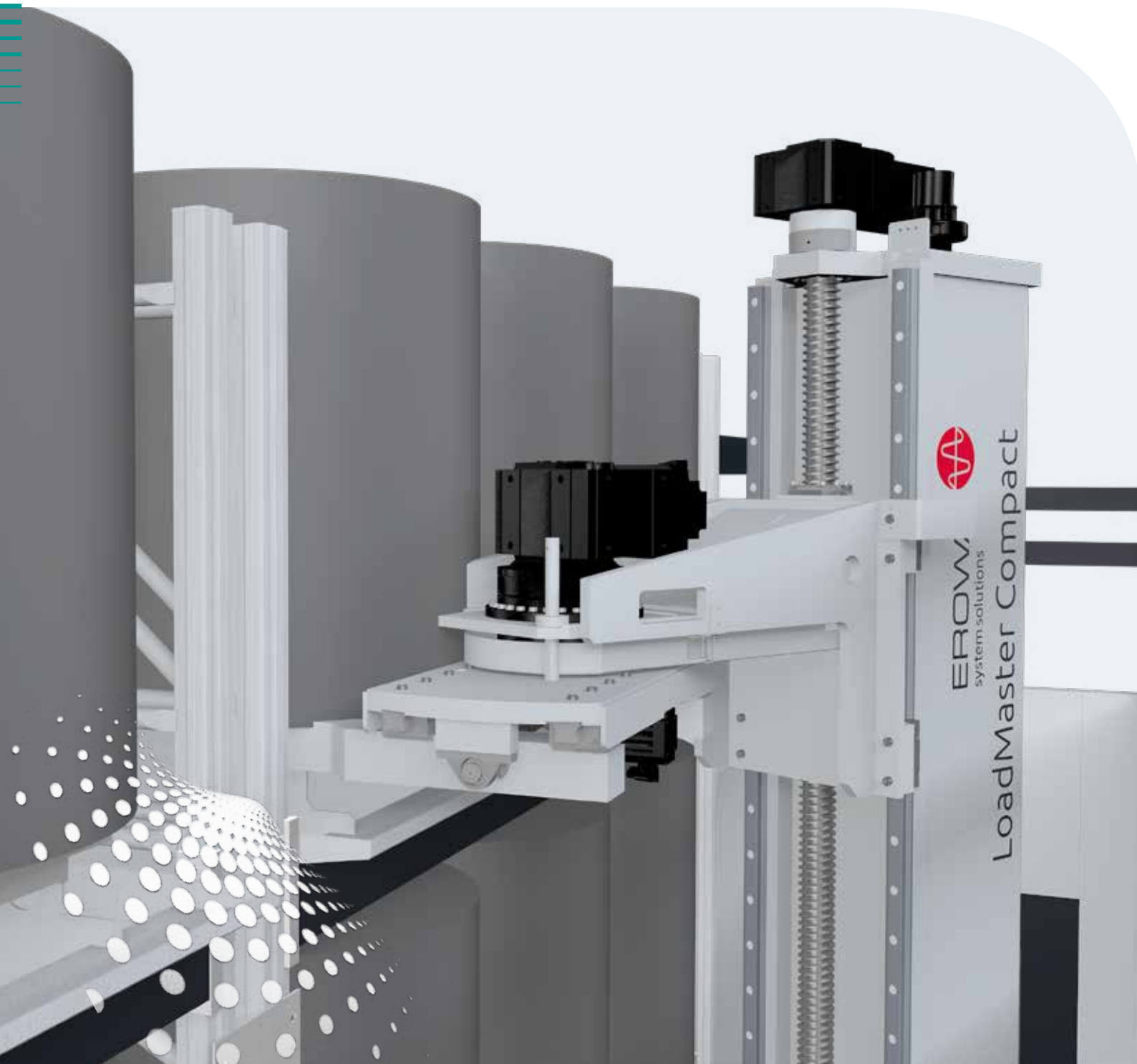


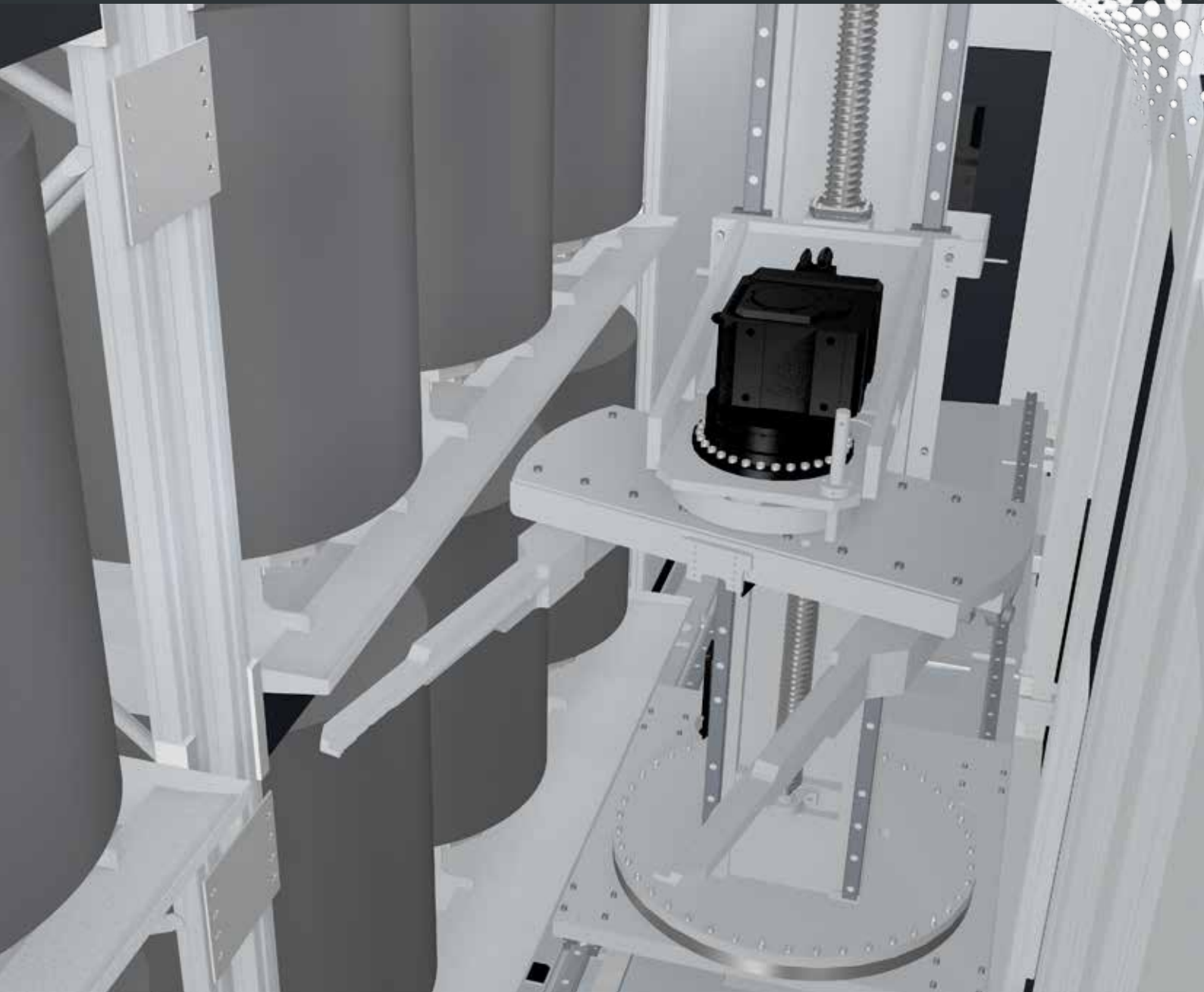
LoadMaster Compact

Automatic Loading of Workpieces



Skilful Loading

The highest standard of mechanical engineering quality, over 30 years of experience in factory automation, global presence. It is fair to say, that the handling facilities of the LoadMaster series manage their loading tasks perfectly. And this in addition to remarkable investment and ROI factors.



Up to 4'000 kg transfer weight. Thanks to the ingenious kinetic system with very limited space requirement. With the 360° swivel function, any position in the magazine and on the machine tables can be reliably reached.

The magazines are of vertical design; the storage positions are arranged over two, three or four levels, saving on space and cost. Each level is optimally configured for typical workpiece sizes.

Walk-in or accessible via sliding doors. The setup stations are integral components of the LoadMaster production lines. Versions are available with lifting unit, with rotating and tilting table, or with indexing table. The setup positions are accessible via overhead crane.



The process control system assists the operator in the daily production flow, with clear displays of system status.

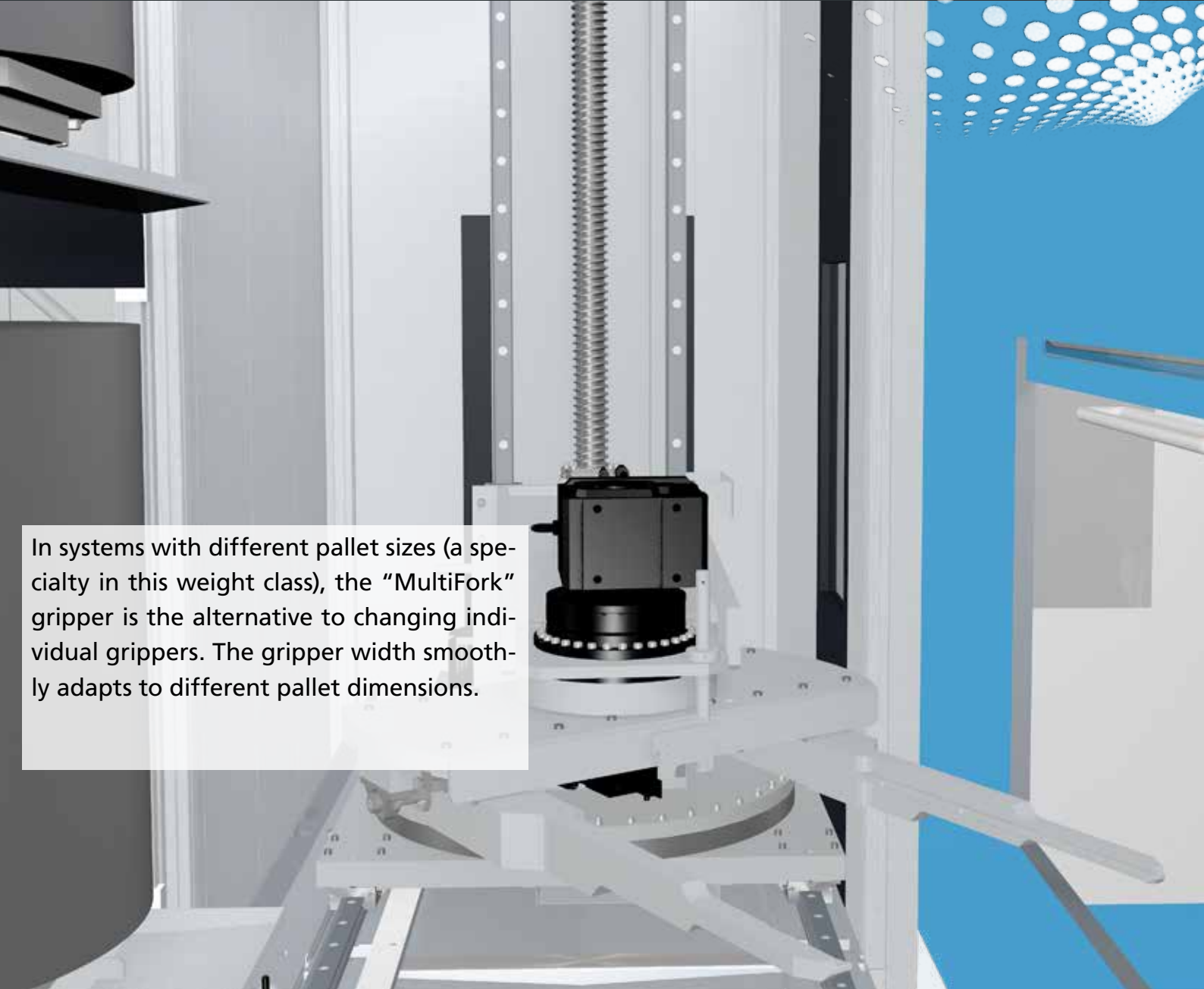


FACTS

- From 500 to 4'000 kg transfer weight
- Up to 4 levels in the magazines
- Ergonomic setup stations
- User-friendly process control system

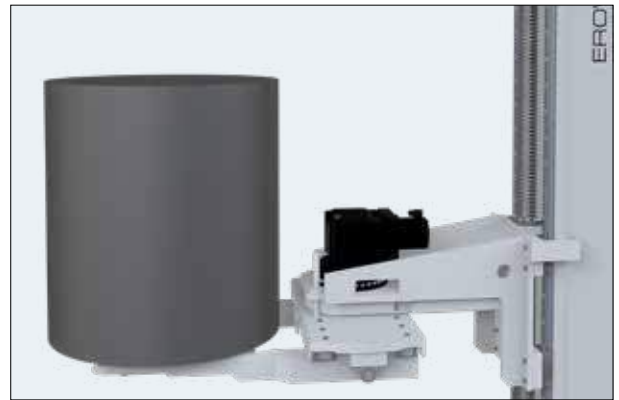
Skilful Transport

The transfer unit moves between the magazines and machines on solid rails. The grippers optimally support the various application scenarios. Double grippers for fast chip-to-chip times or MultiFork for automatic loading of different pallet sizes.

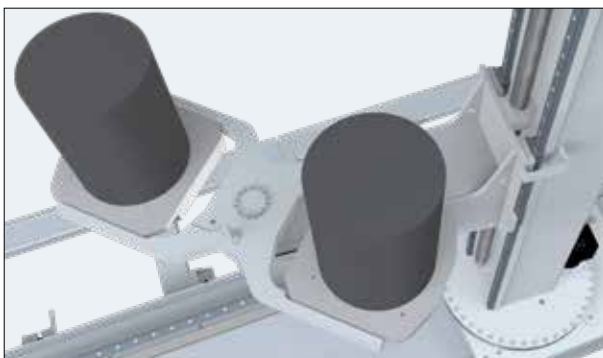
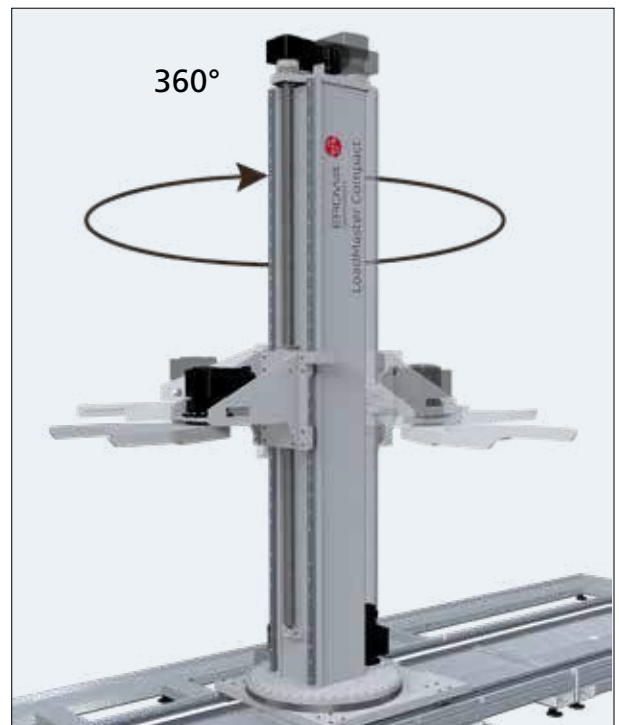


In systems with different pallet sizes (a specialty in this weight class), the “MultiFork” gripper is the alternative to changing individual grippers. The gripper width smoothly adapts to different pallet dimensions.

Solid technology for large workpieces. Adapted design for weights that are moved most frequently.



360° freedom of turning range. Along with the swiveling axis of the gripper arm, this results in efficient loading and unloading of the machine table and storage position.



The "TwinFork" double gripper significantly reduces chip-to-chip time when changing pallets. This is an important factor for long transfer distances and short machining times.

FACTS

- 360° freedom of the tower axle
- Adapted gripper system
- Fast chip-to-chip time
- Accessibility to machine tables

Skilful Storage

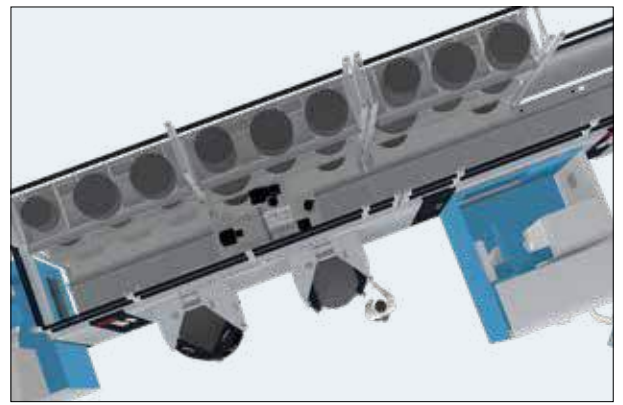
We refer to them as pallet storage units, magazines, or storage locations. The name is the program and the program is very flexible. Both the level height and arrangement by level can be adapted to the workpiece sizes used. And since there is often still more space vertically, we also build up to four levels high – this is optimal use of space!



Mixed pallet sizes in a production line allow optimal use of the available space. A magazine module consists of a rack with up to 4 levels. The transfer unit's rail is integrated.



The magazine modules can be combined in series. There are no limits on the number of units to be connected. The total rail length depends on the number of machines and their positioning.



Modules are available with or without pallet storage unit. A drip pan for returning coolant is located under each pallet position. Safety devices that comply with applicable guidelines protect the entire system.

FACTS

- Modules can be combined in series
- Drip pans per magazine position
- Integrated safety device
- Monitored access door

The next step

Important things need to be planned. And your next step is certainly among the important things. It is your start into a new, efficient era. We are pleased to be with you on the way. As consultants, in practice. For you to know at all times what you're engaging in.

The next EROWA branch office is not far – **take the step.**



USA

EROWA Technology, Inc.
North American Headquarters
2535 South Clearbrook Drive
Arlington Heights, IL 60005
USA
Tel. 847 290 0295
Fax 847 290 0298
e-mail: info@erowa.com
www.erowa.com

Italy

EROWA Tecnologie S.r.l.
Sede Legale e Amministrativa:
Via Alfieri Maserati 48
IT-10095 Grugliasco (TO)
Italy
Tel. 011 9664873
Fax 011 9664875
info@erowa.it
www.erowa.com

Unità di Treviso:
Via Leonardo Da Vinci 8
IT-31020 Villorba (TV)
Italy
Tel. 0422 1627132

Singapore

EROWA South East Asia Pte. Ltd.
56 Kallang Pudding Road
#06-02, HH@Kallang
Singapore 349328
Singapore
Tel. 65 6547 4339
Fax 65 6547 4249
sales.singapore@erowa.com
www.erowa.com

Japan

EROWA Nippon Ltd.
Sibadaimon Sasano Bldg.
2-6-4, Sibadaimon, Minato-ku
105-0012 Tokyo
Japan
Tel. 03 3437 0331
Fax 03 3437 0353
info@erowa.co.jp
www.erowa.com

Switzerland

EROWA AG
Knutwilerstrasse 3
CH-6233 Büron
Switzerland
Tel. 041 935 11 11
Fax 041 935 12 13
info@erowa.com
www.erowa.com

France

EROWA Distribution France Sàrl
PAE Les Glaisins
12, rue du Bulloz
FR-74940 Annecy-le-Vieux
France
Tel. 4 50 64 03 96
Fax 4 50 64 03 49
erowa.france@erowa.com
www.erowa.com

Spain

EROWA Technology Ibérica S.L.
c/ Avda. Cornellá, 142 7ª 3ª ext.
E-08950 Esplugues de Llobregat - Barcelona
Spain
Tel. 093 265 51 77
Fax 093 244 03 14
erowa.iberica.info@erowa.com
www.erowa.com

China

EROWA Technology (Shanghai) Co., Ltd.
G/F, No. 24 Factory Building House
69 Gui Qing Road (Caohejing Hi-tech Park)
Shanghai 200233, PRC
China
Tel. 021 6485 5028
Fax 021 6485 0119
info@erowa.cn
www.erowa.com

Germany

EROWA System Technologien GmbH
Gewerbegebiet Schwadernmühle
Roßendorfer Straße 1
DE-90556 Cadolzburg/Nbg
Germany
Tel. 09103 7900-0
Fax 09103 7900-10
info@erowa.de
www.erowa.de

Scandinavia

EROWA Technology Scandinavia A/S
Fasanvej 2
DK-5863 Ferritslev Fyn
Denmark
Tel. 65 98 26 00
Fax 65 98 26 06
info.scandinavia@erowa.com
www.erowa.com

Eastern Europe

EROWA Technology Sp. z o.o.
Eastern Europe
ul. Spółdzielcza 37-39
55-080 Kały Wrocławskie
Poland
Tel. 71 363 5650
Fax 71 363 4970
info@erowa.com.pl
www.erowa.com

India

EROWA Technology (India) Private Limited
No: 6-3-1191/6, Brij Tarang Building
Unit No-3F, 3rd Floor, Greenlands, Begumpet,
Hyderabad 500016 (Telangana)
India
Tel. 040 4013 3639
Fax 040 4013 3630
sales.india@erowa.com
www.erowa.com